

MODEL SYSTEM 1A

10,000 LB. CLEAR FLOOR TWO POST LIFT



TO MEET THE ONE AND ONLY
NATIONAL SAFETY STANDARD
FOR VEHICLE LIFTS

THE LIFT YOU CAN'T WEAR OUT



MOHAWK

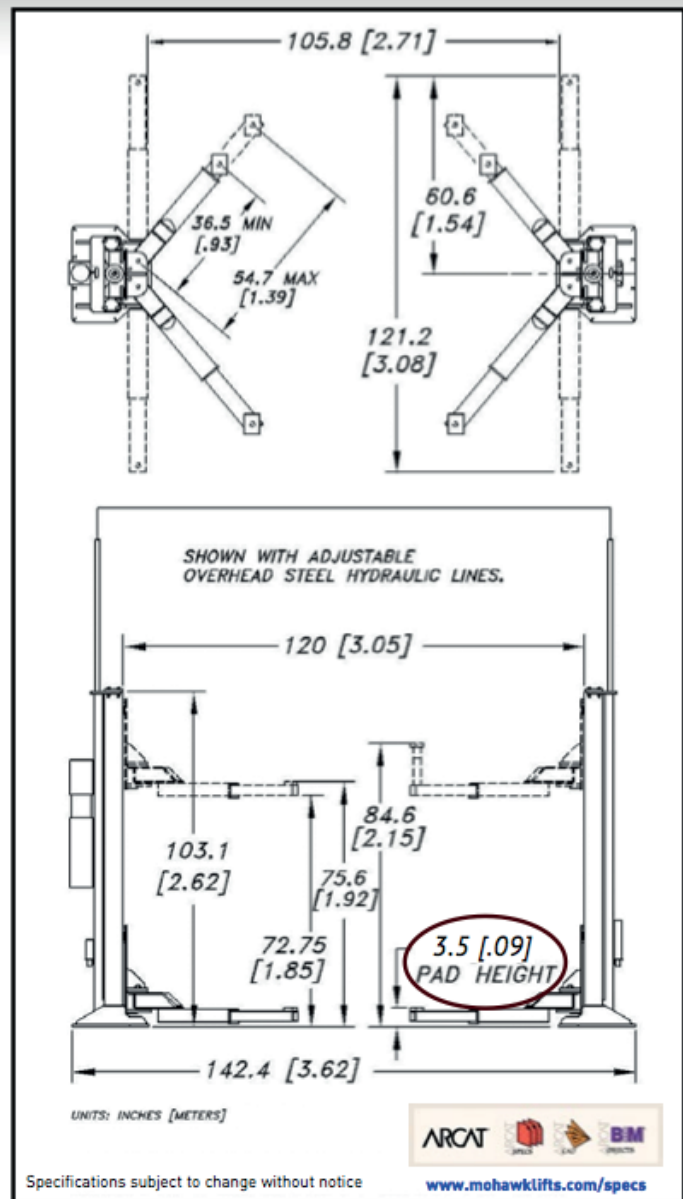
Americas Best Lift Investment...

Still proudly designed, welded
and manufactured in the U.S.A.



MODEL SYSTEM I SPECIFICATIONS

Capacity:	10,000 lbs. (4535.92 kg)
Lifting Speed:	50 seconds (faster with lighter load)
Motor Rating:	2.0 HP/208-230V, Single-phase (3Ø optional)
Synchronization:	Hydraulic fluid displacement using no chains, cables, or overhead obstructions
Arm Pad Height:	3 1/2" (8.89 cm) min.
Lifting Height:	6' (1.83 m) under arm
Arm Pad Height @ Full Rise:	6' 3 1/2" (1.84 m) min.
Lift Pad Height with Adaptors:	7' 1/2" (2.15 m)
Overall Width:	11' 10" (3.61 m) (adjustable)
Width Between Posts:	10' (3.05 m) (adjustable)
Width Between Lifting Arms:	8' 10" (2.69 m) (adjustable)
Column Height:	8' 7" (2.62 m)
Overhead Hydraulic Line Height:	12' (3.51 m) Standard (adjustable to accommodate any height ceiling or routed in-floor)
Weight:	2500 lbs. (1088.62 kg)
Concrete Floor Requirements:	4000 psi (27579.02 kPa) mix 4 1/2" (11.43 cm) depth
Anchoring System: Included	(16) 3/4"x5" (1.9x12.7 cm) bolts
Mechanical Safety Locks:	Automatic; all position starting @ 5" (7.62 cm) off the floor
Hydraulic Safety Systems:	Automatic; all position
Swing Arm Restraints:	Automatic upon ascent
Cylinders:	2 (1 per column)
Drive System:	#646 leaf chain routed over cylinder
3" Frame Adaptors (stackable):	4 included as standard equipment
6" Frame Adaptors (stackable):	4 included as standard equipment
Steel Carriage Bearings:	(8) per carriage, double sealed, self-lubricating
Floor Access Between Posts:	Clear and unobstructed
Warranty:	25 years structural, 10 year mechanical, plus limited lifetime cylinder seal warranty



Mohawk builds the best products with the finest materials, to the highest standards. Just compare our lifts. Our staff will assist you with a fleet evaluation, design assistance and answer any technical questions you have. We invite your calls.

Mohawk lifts are manufactured in compliance with the following standards: ALI, ANSI, ASME, AISI, ASTM, ASA, NEC, AWG, NEMA.

MEETS CURRENT NATIONAL ANSI CODE FOR LIFTS.



Mohawk Resources, LTD.

P.O. Box 110
65 Vrooman Ave
Amsterdam, NY 12010
(800) 833-2006
(518) 842-1431
FAX: (518) 842-1289
www.mohawklifts.com



GSA
contract
#GS-07F-
207AA



AVAILABLE UNDER
DISCOUNTED
GOVERNMENT CONTRACT
IN ALL 50 STATES

DISTRIBUTED BY:



For more detailed product information read this book at
www.mohawklifts.com/wmamam



www.facebook.com/mohawklifts